

June | 09
INTRODUCING



GRAPHIC™

Designed by Zoey Chu, GRAPHIC offers a Euro-style, slim profile back with a high tech multi-position sliding armcap. It features a spring balanced, posture style back that moves easily from keyboarding tasks to reclined conferencing. GRAPHIC'S exterior chair back design is available in three versions: durable, detailed nylon shell, fabric upholstered shell, and leather upholstered shell. Multiple base and finish options complete the customization of each GRAPHIC model.

Choose from hundreds of standard Global textiles (Leather, fabric and vinyl), COM or from our textile partners Knoll Textiles, DesignTex, Maharam, Spinneybeck, Momentum Textiles and Ultra Fabrics

Merchandise Mart Showroom 1035, 10th Floor

For further information and/or additional photography/digital images for publication please contact:
USA: Michael Fishman, Director of Marketing and Design T: 856.552.3787 email: mfishman@globalindustries.com
Canada: Lonna Yorg-Turner, Director of Marketing Services T: 416.650.6194 email: lonna@globaltotaloffice.com

WWW.GLOBALTOTALOFFICE.COM

NeoCon 2009 Press Release

thinkglobal



June | 09
INTRODUCING

GRAPHIC™



Graphic A



Graphic B



Graphic C



Graphic Feature

Merchandise Mart Showroom 1035, 10th Floor

For further information and/or additional photography/digital images for publication please contact:
USA: Michael Fishman, Director of Marketing and Design T: 856.552.3787 email: mfishman@globalindustries.com
Canada: Lonna Yorg-Turner, Director of Marketing Services T: 416.650.6194 email: lonna@globaltotaloffice.com

WWW.GLOBALTOTALOFFICE.COM

NeoCon 2009 Press Release

thinkglobal



June | 09
INTRODUCING



DUFFERIN™

DUFFERIN presents a bold contemporary approach to desking solutions. The fusion of wood veneer, laminate, glass and steel offers a limitless range of design possibilities for any office environment. The worksurfaces, drawers and cabinet fronts surround the user with the aesthetic and tactile qualities of natural wood. The chassis and cabinets are made from laminate to provide a rich complimentary look that is both durable and cost effective.

DUFFERIN components can be configured for every area of the office environment including executive suites, management offices, teaming work groups, individual work stations, small meeting room sand corporate boardrooms.

DUFFERIN's various wood species are offered in sixteen beautiful finishes and are complimented by your choice of eight neutral laminates.

Merchandise Mart Showroom 1035, 10th Floor

For further information and/or additional photography/digital images for publication please contact:
USA: Michael Fishman, Director of Marketing and Design T: 856.552.3787 email: mfishman@globalindustries.com
Canada: Lonna Yorg-Turner, Director of Marketing Services T: 416.650.6194 email: lonna@globaltotaloffice.com

WWW.GLOBALTOTALOFFICE.COM

NeoCon 2009 Press Release

thinkglobal



June | 09
INTRODUCING

DUFFERIN™



Dufferin A



Dufferin B



Dufferin C



Dufferin D

Merchandise Mart Showroom 1035, 10th Floor

For further information and/or additional photography/digital images for publication please contact:
USA: Michael Fishman, Director of Marketing and Design T: 856.552.3787 email: mfishman@globalindustries.com
Canada: Lonna Yorg-Turner, Director of Marketing Services T: 416.650.6194 email: lonna@globaltotaloffice.com

WWW.GLOBALTOTALOFFICE.COM

NeoCon 2009 Press Release

thinkglobal



June | 09

INTRODUCING

BRIDGES™



Introducing BRIDGES... versatile work tables that enhance communication and collaboration. BRIDGES tables and components work in unison to address the needs of various environments, from team-oriented open concepts to private offices, boardrooms or training rooms. Define and facilitate your personal work style or space by selecting from a variety of side tables, privacy screens and accessory items. BRIDGES is available in a wide variety of finishes and colors.

Merchandise Mart Showroom 1035, 10th Floor

For further information and/or additional photography/digital images for publication please contact:
USA: Michael Fishman, Director of Marketing and Design T: 856.552.3787 email: mfishman@globalindustries.com
Canada: Lonna Yorg-Turner, Director of Marketing Services T: 416.650.6194 email: lonna@globaltotaloffice.com

WWW.GLOBALTOTALOFFICE.COM

NeoCon 2009 Press Release

thinkglobal



June | 09



INTRODUCING BRIDGES™



Bridges A

Merchandise Mart Showroom 1035, 10th Floor

For further information and/or additional photography/digital images for publication please contact:
USA: Michael Fishman, Director of Marketing and Design T: 856.552.3787 email: mfishman@globalindustries.com
Canada: Lonna Yorg-Turner, Director of Marketing Services T: 416.650.6194 email: lonna@globaltotaloffice.com

WWW.GLOBALTOTALOFFICE.COM

NeoCon 2009 Press Release

thinkglobal



June | 09

INTRODUCING

KARGO™



KARGO offers an innovative solution to common storage problems, making it an integral part of any office. KARGO provides flexible and interchangeable solutions for office storage requirements while serving as a modular space divider. This shared storage solution is easy to assemble, customize and re-configure. KARGO's design allows collaborative space within an office, addressing the habits of today's office workers. The KARGO filing & storage solution defines the forward - thinking, contemporary office.

Choose from hundreds of possible configurations, sizes and options such as electronic security lock keypad, pass through collaborative modules, and 1 1/2 " thick work tops.

KARGO is available in 24 standard paint colors or can be custom color matched to any design scheme

Merchandise Mart Showroom 1035, 10th Floor

For further information and/or additional photography/digital images for publication please contact:
USA: Michael Fishman, Director of Marketing and Design T: 856.552.3787 email: mfishman@globalindustries.com
Canada: Lonna Yorg-Turner, Director of Marketing Services T: 416.650.6194 email: lonna@globaltotaloffice.com

WWW.GLOBALTOTALOFFICE.COM

NeoCon 2009 Press Release

thinkglobal



June | 09
INTRODUCING

KARGO™



Kargo A



Kargo B



Kargo C



Kargo D

Merchandise Mart Showroom 1035, 10th Floor

For further information and/or additional photography/digital images for publication please contact:
USA: Michael Fishman, Director of Marketing and Design T: 856.552.3787 email: mfishman@globalindustries.com
Canada: Lonna Yorg-Turner, Director of Marketing Services T: 416.650.6194 email: lonna@globaltotaloffice.com

WWW.GLOBALTOTALOFFICE.COM

NeoCon 2009 Press Release

thinkglobal



June | 09
INTRODUCING

ZIRA™



ZIRA is the newest full-featured desking series from GLOBAL. Imagine an office environment that truly works with you, featuring unlimited possibilities for teaming, managerial and executive suites, meeting and conferencing . . . and absolutely everything in between. ZIRA works to make YOUR work day more efficient and takes office environments to new heights with components that can create 84" high workstations. Offering endless work space configurations – practical yet compact storage components – hundreds of laminate finish combinations – and a host of contemporary options, ZIRA fits the way you work.

Merchandise Mart Showroom 1035, 10th Floor

For further information and/or additional photography/digital images for publication please contact:
USA: Michael Fishman, Director of Marketing and Design T: 856.552.3787 email: mfishman@globalindustries.com
Canada: Lonna Yorg-Turner, Director of Marketing Services T: 416.650.6194 email: lonna@globaltotaloffice.com

WWW.GLOBALTOTALOFFICE.COM

NeoCon 2009 Press Release

thinkglobal
GLOBAL

June | 09
INTRODUCING

ZIRA™



Zira A



Zira B



Zira C



Zira D

Merchandise Mart Showroom 1035, 10th Floor

For further information and/or additional photography/digital images for publication please contact:
USA: Michael Fishman, Director of Marketing and Design T: 856.552.3787 email: mfishman@globalindustries.com
Canada: Lonna Yorg-Turner, Director of Marketing Services T: 416.650.6194 email: lonna@globaltotaloffice.com

WWW.GLOBALTOTALOFFICE.COM

NeoCon 2009 Press Release

thinkglobal



June | 09
INTRODUCING

CAPRICE™



CAPRICE elevates guest seating to the next level with its sleek, innovative design. A generous tapered seat and back design provide comfortable support while maintaining a light and graceful appearance. Curved urethane capped armrests envelop the user with soft comfort.

GLOBAL is pleased to announce additional line extensions to this popular seating solution with a new Sled Base model, Counter Stool and Bar Stool model . . . for seating throughout the office! CAPRICE is perfect for guest seating, meeting rooms, lounge and waiting rooms, cafés and congregational settings. Order CAPRICE with casters and create a contemporary mobile seating solution.

All CAPRICE models are standard with a tungsten frame finish. Optional Charcoal Grey, Black and Chrome frame finishes are also available along with hundreds of textile and leather options.

Choose from hundreds of standard Global textiles (Leather, fabric and vinyl), COM or from our textile partners Knoll Textiles, DesignTex, Maharam, Spinneybeck, Momentum Textiles and Ultra Fabrics



Merchandise Mart Showroom 1035, 10th Floor

For further information and/or additional photography/digital images for publication please contact:
USA: Michael Fishman, Director of Marketing and Design T: 856.552.3787 email: mfishman@globalindustries.com
Canada: Lonna Yorg-Turner, Director of Marketing Services T: 416.650.6194 email: lonna@globaltotaloffice.com

WWW.GLOBALTOTALOFFICE.COM

NeoCon 2009 Press Release

thinkglobal



June | 09
INTRODUCING

CAPRICE™



Caprice Sled Base Front



Caprice Sled Base Back



Caprice Counter Height Stool



Caprice Bar Height Stool

Merchandise Mart Showroom 1035, 10th Floor

For further information and/or additional photography/digital images for publication please contact:
USA: Michael Fishman, Director of Marketing and Design T: 856.552.3787 email: mfishman@globalindustries.com
Canada: Lonna Yorg-Turner, Director of Marketing Services T: 416.650.6194 email: lonna@globaltotaloffice.com

WWW.GLOBALTOTALOFFICE.COM

NeoCon 2009 Press Release

thinkglobal



June | 09
INTRODUCING

GLOBAL ACCORD MESH™



GLOBAL ACCORD MESH is the latest addition to the award winning Global Accord seating series created by designer Zooey Chu. The breathable mesh back promotes airflow and comfort and gently supports the natural curve of the spine to reduce fatigue during extended meetings. Other features include polished aluminum arms, soft urethane arm caps, pneumatic seat height adjustment, tilt-tension adjustment and multiple position tilt control lock.

Choose from hundreds of standard Global textiles (Leather, fabric and vinyl), COM or from our textile partners Knoll Textiles, DesignTex, Maharam, Spinneybeck, Momentum Textiles and Ultra Fabrics

The Global Accord series has received numerous accolades:



Merchandise Mart Showroom 1035, 10th Floor

For further information and/or additional photography/digital images for publication please contact:
USA: Michael Fishman, Director of Marketing and Design T: 856.552.3787 email: mfishman@globalindustries.com
Canada: Lonna Yorg-Turner, Director of Marketing Services T: 416.650.6194 email: lonna@globaltotaloffice.com

WWW.GLOBALTOTALOFFICE.COM

NeoCon 2009 Press Release

thinkglobal



June | 09
INTRODUCING

GLOBAL
ACCORD
MESH™



Global Accord Mesh Feature



Global Accord Mesh A



Global Accord Mesh B



Global Accord Mesh Stool

Merchandise Mart Showroom 1035, 10th Floor

For further information and/or additional photography/digital images for publication please contact:
USA: Michael Fishman, Director of Marketing and Design T: 856.552.3787 email: mfishman@globalindustries.com
Canada: Lonna Yorg-Turner, Director of Marketing Services T: 416.650.6194 email: lonna@globaltotaloffice.com

WWW.GLOBALTOTALOFFICE.COM

NeoCon 2009 Press Release

thinkglobal



June | 09
INTRODUCING



TEXTILE PROGRAM

Global is pleased to introduce a cooperative program with five of the biggest names in the custom textile marketplace.



Each of these companies have worked with Global to develop custom textile cards that feature some of their most popular patterns and color ways. But as convenient as these new cards are to selecting designer textiles, we are now completing a grade-in program on the ENTIRE product line from each brand.

Through our alignment with these industry leaders, Global is making it easier than ever for your customer to order the textiles you want on virtually any Global seating model or soft seating model. Many of these textiles grades have been significantly reduced making them even more affordable than before. All you need to do is specify what you want whether from the custom card or from any other pattern within each vendors extensive offering - and Global will do the rest.

This new textile program is extremely simple and streamlined; you can provide exactly what your customer desires and do so at modest costs. In short, it's a program you can work with where value is always in style!

Merchandise Mart Showroom 1035, 10th Floor

For further information and/or additional photography/digital images for publication please contact:
USA: Michael Fishman, Director of Marketing and Design T: 856.552.3787 email: mfishman@globalindustries.com
Canada: Lonna Yorg-Turner, Director of Marketing Services T: 416.650.6194 email: lonna@globaltotaloffice.com

WWW.GLOBALTOTALOFFICE.COM

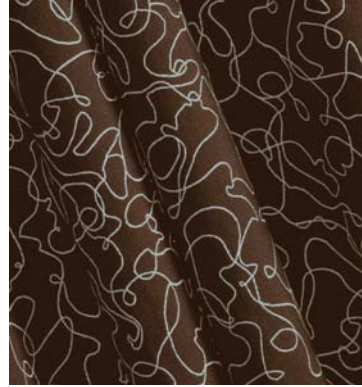
NeoCon 2009 Press Release

thinkglobal



June | 09
INTRODUCING

TEXTILE PROGRAM



DesignTex



Knoll Textiles



Maharam



Momentum Textiles



Spinneybeck



Ultra Fabrics

Merchandise Mart Showroom 1035, 10th Floor

For further information and/or additional photography/digital images for publication please contact:
USA: Michael Fishman, Director of Marketing and Design T: 856.552.3787 email: mfishman@globalindustries.com
Canada: Lonna Yorg-Turner, Director of Marketing Services T: 416.650.6194 email: lonna@globaltotaloffice.com

WWW.GLOBALTOTALOFFICE.COM

NeoCon 2009 Press Release

thinkglobal
GLOBAL