



Alexandra/ Alexandra Wood



B1300



B1310



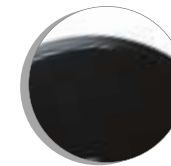
Alexandra/Alexandra Wood

- Brushed or mirror chromed Slimline™ hydraulic base with round tube chromed footrest
- Molded polyurethane or molded wood arms in Light/Medium Oak and Mahogany finishes
- Standard in Grade 1 Leatherite and available in Grade 4 Mor-Care vinyl and Grade 7 Leather/Mock Leather combination



B1303

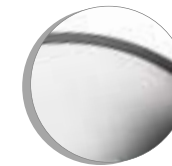
Hydraulic Base Finishes



Black



White









Brushed Chrome



Mirrored Chrome

Specifications

	DESCRIPTION	DIMENSIONS			WEIGHT LBS kg	VOLUME FT ³ m ³
		W IN mm	D IN mm	H IN mm		
ALEXANDRA						
B1300	 Hydraulic Styling Chair	26½ 673	33 838	41 1041	66 29.9	9.5 0.27
B1303	 Dryer Chair	25½ 648	35 889	33½ 845	46 20.9	9.5 0.27
B1304	 Reception Chair	25 635	29 737	38 965	34 15.4	9.5 0.27
ALEXANDRA WOOD						
B1310	 Hydraulic Styling Chair	25¾ 652	34 870	41 1041	64 29	9.5 0.27
B1313	 Dryer Chair	25½ 648	35 889	33½ 845	46 20.9	9.5 0.27
B1314	 Reception Chair	25 635	29 737	38 965	34 15.4	9.5 0.27

Global - Canada
560 Supertest Road Downsview
Ontario Canada M3J 2M6 Tel: (416) 661-3660
Dealer Customer Service: Fax: (416) 736-6685
Government Customer Service: Fax: (416) 739-6319

Global - U.S.A.
17 West Stow Road P.O. Box 562
Marlton New Jersey U.S.A. 08053
Tel: (856) 596-3390 (800) 220-1900
Fax: (856) 596-5684

Global - International
560 Supertest Road Downsview
Ontario Canada M3J 2M6
Tel: (416) 661-3660
Fax: (416) 667-1821

G.G.I. Office Furniture (UK) Ltd.
Global Way, Darwen,
Lancashire BB3 0RW, UK
Tel: +44(0) 1254 778500
Fax: +44(0) 1254 778519

Visit us on the World Wide Web at www.globaltotaloffice.com
Offices throughout Canada, United States, United Kingdom, France and Australia. Distribution around the world. A member of the Global Group.

saloncollection